



UNIVERSIDADE  
FEDERAL  
DE PERNAMBUCO

# International Student Guide



DIRETORIA DE RELAÇÕES INTERNACIONAIS  
INTERNATIONAL AFFAIRS OFFICE



# Summary

## INTRODUCTION

Welcome to UFPE.....	3
UFPE in numbers.....	4
The University.....	5
International Affairs Office.....	8

## INTERNATIONAL MOBILITY

International Mobility Program.....	10
General requirements.....	10
Duration of the program.....	10
How to apply.....	11
Application deadlines.....	11
Financial Terms.....	11
Application step by step.....	11

## PRACTICAL INFORMATION

About UFPE.....	13
Semesters.....	13
Academic credit.....	13
Evaluation system.....	13
Grading scale.....	14
A friend at UFPE.....	14
Before leaving your country.....	15
Health insurance.....	15
Student visa.....	15

## AFTER YOUR ARRIVAL

Arriving in Brazil.....	18
When to arrive at UFPE.....	18
At the airport.....	18
Procedures at UFPE.....	19
Reporting at DRI.....	19
Library Registration.....	19
Wi-fi access.....	20
Portuguese classes.....	20
“Social Name”.....	20
Before returning to your home country.....	21

## ORGANIZING YOUR LIFE IN RECIFE

Legal Procedure.....	23
Federal Police registration.....	23
How to issue your CNRM.....	23
Other documents.....	25
Obtaining a CPF.....	25
Banco do Brasil.....	25
Student card.....	25
VEM Card (transportation).....	25
Transport.....	26
In the Campus .....	27
Telephone.....	28
Accommodation.....	29

## CULTURE AND LEISURE

Welcome to Brasil.....	3
Recife.....	32
The recifense.....	33
What to visit in Recife.....	34
In the neighbouring area.....	37
Eating.....	39
Popular Celebrations.....	40
Holidays.....	41

## UTILITIES

University's Map.....	44
Useful telephones.....	44
Undergraduate courses.....	45
Graduate courses.....	46
Accommodation List.....	47



# Introduction



# Welcome to UFPE



Class of 2015

at our Main Library

It is our pleasure to welcome you to our University. This guide is addressed to all foreign students who are going to study at Universidade Federal de Pernambuco. This may be your first visit to Brazil and we are sure you may have many questions. One of the objectives of this guide is to answer some of them before you arrive, in order to ease your integration into academic life here. In the following pages you will find a general description of our University, some practical advice which will be of use before leaving your own country, and information about your arrival in Recife, university services, as well as addresses of interest.

Studying in a foreign country is both an exciting and a challenging experience. In addition to learning about other cultures and practicing your language skills, the overseas study can help you make progress toward your degree and get a career-related experience. The International Office would like your stay in Recife to be productive and

enjoyable. Our city offers a broad variety of cultural activities, which we hope you will enjoy.

The International Academic Mobility Program for foreign students was created with the goal of providing opportunities for qualified young people who want to enjoy an academic and cultural experience in Brazil for a period of their university life. Besides having the opportunity of getting to know the Brazilian way of life, these students help the UFPE campus to become more dynamic. They bring with them new experiences, lifestyles and ideas, making the campus inside and outside the classrooms more enriched and exciting.

The International Office is also responsible for disseminating information about the programs of international cooperation and for providing support for student's participation in international academic mobility programs since their arrival until their return to their country of origin.

DBI ♥



# UFPE in numbers

## COMMUNITY

**43375** Students  
**30678** Undergraduates  
**12697** Graduates

**2834** Faculty Members (78% PhD)

**4184** Administrative Staff Members

## COURSES

**105** Undergraduate Programmes (5 Distance Learning)

**189** Postgraduate Programmes

**51** PhD  
**82** Masters  
**56** Specializations

## INTERNATIONAL

Received over **1200** students from **34** different countries

**180** Cooperation Agreements

Sent almost **3000** students abroad in the last 7 years

## EXCELENCE

**200 years** of legacy – one of the first universities in the country

Focus on **Research and Innovation** – over 2300 active researchers and world reference in the HIV research

**15th** position in Brazil and **45th** in Latin America (QS Universities Ranking Latin America 2018)



# The University

**Traditional colleges came together to establish one of today's most important public universities in Brazil, with a legacy of almost 200 years.**

Located in the Northeast of Brazil, the Universidade Federal de Pernambuco (UFPE) is one of the best institutions of Higher Education in the country. Its history goes back to the foundation of the first Law School in the country, in 1827. On August 11th, 1946, the Law School, the Engineering School, the Medicine School, the School of Dentistry and Pharmaceutics and the School of Fine Arts and Philosophy decided to become part of one institution and the Universidade do Recife was founded. Later, the Universidade do Recife was integrated to the group of federal institutions that made up the new educational system of the country, receiving the denomination of Universidade Federal de Pernambuco. The construction of the new campus began in 1948, in an area which was then considered on the outskirts of the city, with a project developed by the Italian architect Mario Russo.

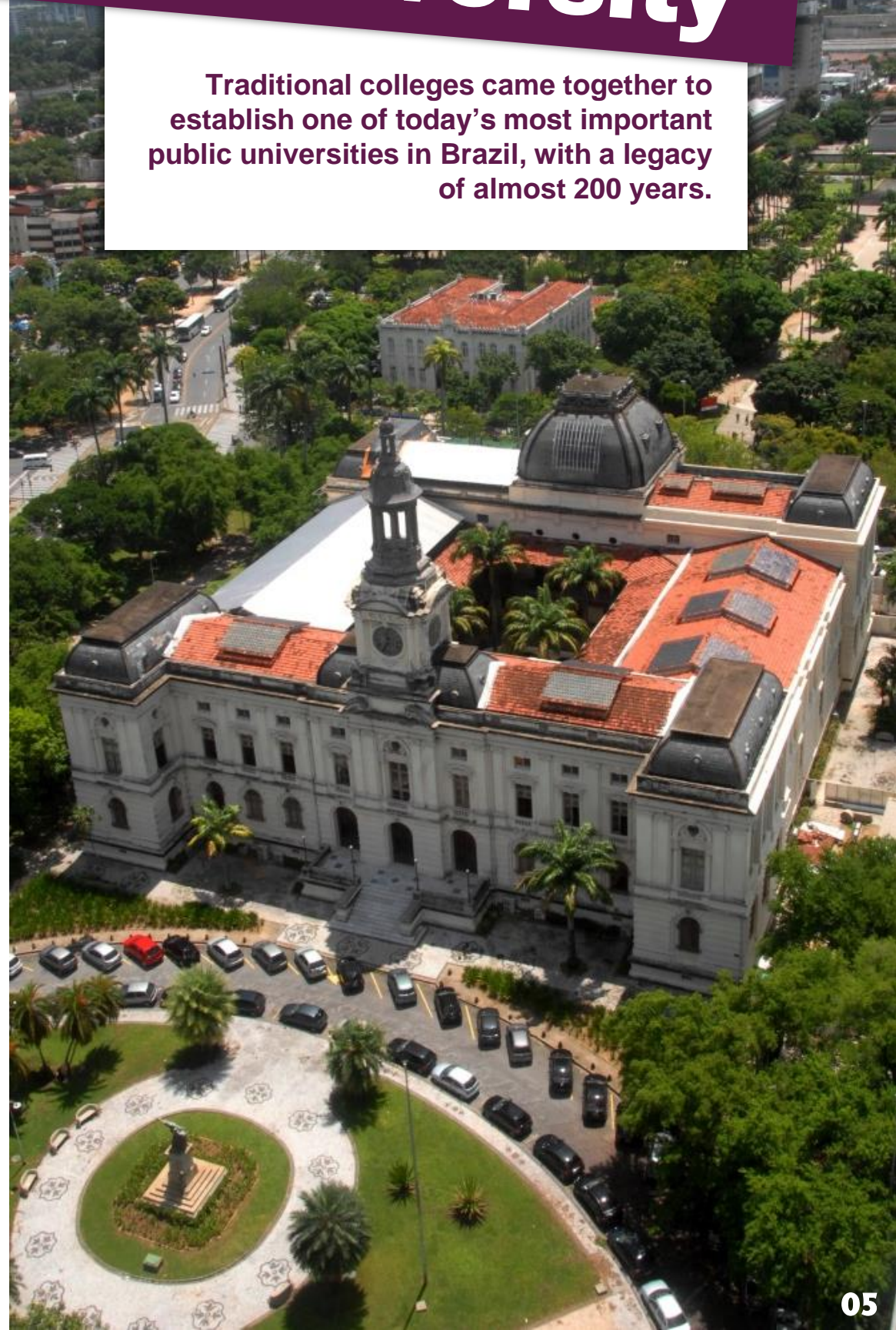
Universidade Federal de Pernambuco is one of the top universities in the country, regarding teaching and scientific research and is considered the best in the northern part of Brazil, according to evaluations from the Ministries of Education (MEC) and Science and Technology (MCT).

With the support of the Federal Government, UFPE has expanded its scope of practice and has widened its interaction with society, increasing the number of students in the already existing courses and creating new ones in response to social and economic demands focused on the new economic scenery of the state of Pernambuco.

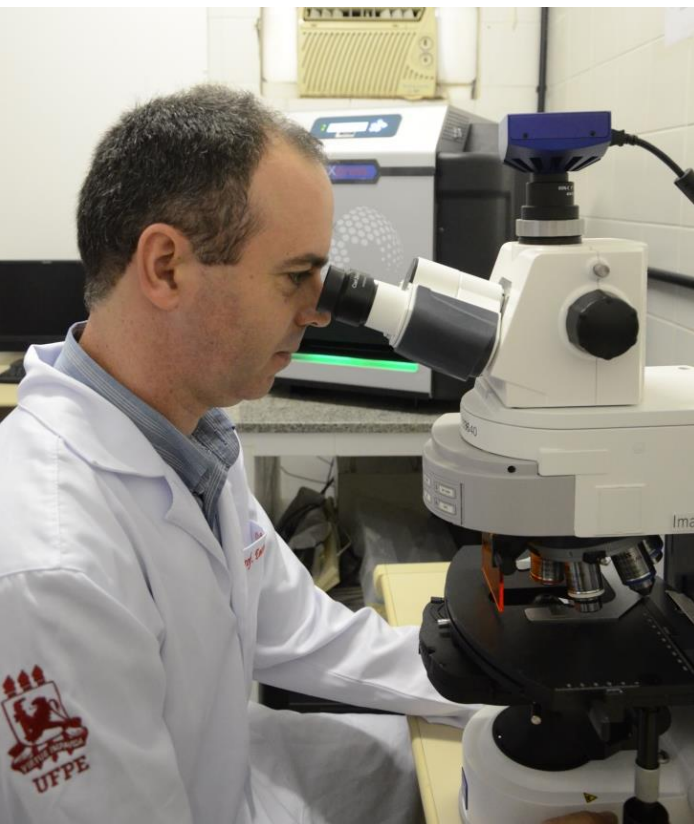
Our mission is to promote the education of people and the formation of scientific and technical knowledge and abilities of international standards, according to ethical, environmental and cultural principles.

*Rector:* Prof. Alfredo Macedo Gomes

*Vice-rector:* Moacyr Cunha de Araújo Filho







**3 Campi • 12 Academic Centres • 1 Main Library + 12 Sectorial Libraries • Restaurant • 6 Snack bars • 804 Labs •  
TV Station • 2 Radio Stations • Convention Centre • Art Gallery • UFPE Press • Technology Information Centre •  
Physical Education and Sports Centre**







# International Affairs Office

Serra Negra - 2016 ♡



## Team

### Director

Maria Leonor Alves Maia  
secci@ufpe.br

### Associate Director

Eva Carolina da Cunha  
secci@ufpe.br

### Partnerships

Rebeca Amorim  
convenios.dri@ufpe.br

### Outgoing Mobility

Suzana Rebeca Lima  
mobilidade.out@ufpe.br

### Incoming Mobility

Vitor Feitosa  
mobilidade.in@ufpe.br

### Communication

Mariana Alves  
divulgacao.dri@ufpe.br

### Student Mobility - System

Cinthia Santos Leal  
Mobilidade.estudantil@ufpe.br

### Financial Support

Alexandre Gurgel  
adm.dri@ufpe.br

UFPE's **International Affairs Office** (DRI) is responsible for the mobility of students and for establishing cooperation agreements with institutions from all over the world. It allows students and professors from Pernambuco to acquire knowledge and share experiences with other countries and cultures.

The work developed in the International Office consists of guiding students and professors that seek information on options and procedures required to study abroad and to establish new international agreements. At the moment, UFPE has settled over 200 agreements with institutions from all of the continents.

Besides sending students to other Universities, the International Office is responsible for receiving foreign students that come to Pernambuco to take part on new academic experiences at UFPE.

Every year, the exchanges between UFPE and other institutions amplifies.

*The International Relations Office receives students  
from Monday to Friday, from 8 a.m until 5 p.m (closes for lunch). 1<sup>st</sup> floor of the Rectory Building  
Phones: + 55 81 2126-8006 / 2126-7021*





# **International Mobility**





# International Mobility Program



## GENERAL REQUIREMENTS TO PARTICIPATE

Every student who belongs to any of the UFPE's partners institutions are eligible to apply for admission in the International Academic Mobility Program.

The students must fulfill the following prerequisites:

- Be regularly enrolled in a course offered by a partner institution;
- Have intermediate proficiency in Portuguese;

It is important to remember that all lessons are taught in Portuguese.

## DURATION OF THE PROGRAM

The International Mobility Program determines that the foreign students may study in our institution for one academic semester, with the possibility of extending their stay for another semester, making it a total of one academic year.

The activities which will be undertaken by the foreign students should be approved in advance by the course coordinators of both universities.

If it is necessary to extend the exchange period, the request should be made official by the home institution and properly reviewed and approved by the coordinators of both institutions.



## WHERE DO OUR INTERNATIONAL STUDENTS COME FROM? (TOP 10)

Germany  
Portugal  
France  
Spain  
Colombia  
United States  
Canada  
Finland  
Holland  
Italy



## HOW TO APPLY

The first step toward becoming a student at UFPE is to begin the admission process and apply. The foreign students are totally responsible for organizing the documents to be presented at UFPE. The validity, legality and on time delivery of documents are also entirely the responsibility of the students, since the documents are personal and non-transferable.

The **basic documentation** to be submitted to participate in the International Academic Mobility Program is listed below:

- Application form, containing a Study plan to be conducted at UFPE, in which the chosen disciplines with the academic loads, duration and number of credits should be described.

It is recommended that students register in a maximum of five disciplines.

All of these documents must be signed and sent to the e-mail **[mobilidade.in@ufpe.br](mailto:mobilidade.in@ufpe.br)**.

## APPLICATION DEADLINES



Two calls are made during the academic year:

- First academic semester (February to June): registrations until **November 30th**.
- Second academic semester (August to December) : Registrations until **May 31st**.

The courses to which the students can apply **to can be consulted [here](#)**.

Once the application form arrives at the International Office, it is sent to the coordinator of the intended programme at UFPE. After analyzing the documents of the foreign student and, with the confirmation of his approval, our International Office will send a document - the Letter of Acceptance - to the student

or to the section in charge of international relations at the student's home university, confirming their acceptance to participate in the Program. This document is official and should be presented to the Brazilian Authorities in order to obtain the student visa.

## FINANCIAL TERMS



UFPE is a public university and does not charge tuition fees. Students should however be responsible for providing the costs for: airline tickets, accommodation, transportation, food, study material, and leisure. The average monthly budget suggested is R\$ 2,000.00 (two thousand reais).



- APPLICATION – STEP BY STEP** !
1. Check if your university is a partner of UFPE and the application deadlines
  2. Fill in the application form, available at DRI's website, and ask the responsible person in your institution to sign it, approving the nomination
  3. Send the filled in form to the e-mail [mobilidade.in@ufpe.br](mailto:mobilidade.in@ufpe.br)
  4. Wait for your application to be evaluated by the coordinators of all Programs you chose in your study plan
  5. As soon as your plan is approved, the DRI will contact you to send you the Acceptance Letter. It is suggested that you should only get a visa and plane tickets after receiving this document



Engenho Massangana - 2018



A man with a beard is shown in profile, focused on writing in a notebook. He is wearing a light-colored shirt. The background is slightly blurred, showing other people in a classroom or lecture hall setting. The overall image has a blue tint.

# **Practical Information**





# About UFPE

## ACADEMIC SEMESTERS

The academic year at UFPE goes from February to December. First semester classes usually starts in February and ends in the beginning of July. The second semester starts in August and ends in December, with an interval ranging from 3 to 5 weeks of vacation between semesters. To obtain the exact dates, it is necessary to check the academic calendar of the current year.

It is always interesting to arrive in Recife at least a few days before the beginning of classes, so that there is time to solve documentation, registration and accommodation issues, as well as attending the international students welcoming event.

## ACADEMIC CREDITS

The academic load is the number of hours required to obtain approval in different disciplines.

One credit corresponds to 15 hours of class, and most subjects available at UFPE have a load equivalent to 04 credits or 60 hours a semester.

It is important to notice that, unlike the European Credit Transfer and Accumulation System (ECTS), UFPE's academic credits do not take into consideration the hours of study extra class, considering only the activities that took place inside the classroom or under a professor's direct supervision.

## EVALUATION SYSTEM

The academic performance of the student will be verified by assessing the grade of the student and the verification of his attendance.

The evaluation of the academic performance of the student will be based on: written exercises, oral interviews (accompanied or not by practical exercises), seminars, reports, practical work, research and internships, (under the guidance and supervision of a professor), development of an essay, and dissertation.

The classes are fully taught in Portuguese, so it is fundamental that the student has enough knowledge of the language to understand the lessons and develop all activities and evaluations.



## GRADING SYSTEM

The attendance at school activities is compulsory, and that the student has to be present in at least 75% (seventy-five percent) of the classes, otherwise he will fail the subject due to absences.

The assessment of academic achievement will be expressed in numerical degrees from 0.00 (zero) to 10.00 (ten). The student who achieves the mandatory attendance percentage and obtains a partial mark (considering the assessments made in the semester) equal to or higher than 7.00 (seven) will be considered approved in the discipline, and his situation on the transcript of records will be APROVADO POR MÉDIA (APPROVED).

The student who obtains a partial mark between 3.00 and 6.99 will take the final exam and will be considered APROVADO (APPROVED AFTER FINAL EXAMS) in the course if he obtains a final score of at least 5.00 (five).

## A BUDDY AT UFPE



The International Office has a program in which Undergraduate or Graduate students that are currently enrolled at UFPE volunteer to help the international students once they arrive at Recife. The buddies receive your contact information a few weeks before your arrival and will contact you to provide any information you might need, meet you at the airport (in case you both decide on that), bring you to UFPE and help you with your enrollment, student card, transportation card and Federal Police registration.

The buddy helps the international student to establish a social network inside the university and will also provide them with the opportunity of practice speaking Portuguese. They usually speak the mother language of the international student or, at least, English.







# Before leaving your country

## HEALTH INSURANCE

2018

In Brazil, health insurance is necessary to receive medical care. As an international student, you are **required** to have it for your entire stay in Brazil. Having it ensures that you comply with visitor regulations, stay healthy, and protect yourself from unexpected medical costs. A copy of this document will be kept at the International Office, in the student's folder.

If the foreign student arrives in Brazil without the health insurance previously done, he will have to acquire one in a local agency.

## STUDENT VISA

To participate in the International Academic Mobility Program or any other activity offered by UFPE, it is necessary that the students obtain the proper visa, valid throughout the period of permanence in Brazil, which should be obtained from the Consular

Division of the Brazilian Embassy or the Brazilian Consulate in the student's home country, before leaving.

It is recommended that the request must be made in advance. It may take awhile from the processing of documents until the granting of the appropriate visa. Without the visa, the student cannot validate their registration at UFPE.

It is important to notice that it is not possible for the exchange student to enroll at UFPE if he only holds a touristic visa. There is also no possibility of switching the kind of visa you have after your arrival in Brazil. It would be necessary to leave the country before getting a new visa, so the student must not leave his country before receiving the student visa.

If there is a **need for renewal**, the student will have to submit the documents to the Federal Police Department thirty (30) days prior to the expiration date.

## VITEM IV (Temporary Visa for Students)

It is the type of visa granted to a foreigner who intends to come to Brazil on a temporary basis, as a student, without any intention of immigration or developing a paid activity.

VITEM IV authorizes the foreigner to attend a courses at an educational institution and may be valid for up to one year (according to acceptance letter). The student is allowed to renew the stay for 1 year each time, for as long as the course lasts. The request for extension must be made at the Federal Police, until 30 (thirty) days before the end of the period previously granted.

After the visa is granted, the interested party has three months to enter Brazil. After entering Brazil, you have 30 days to register with the Federal Police Department of the city where you will live.



## Documents required for obtaining a Student Visa



As a general rule, the following documents will be necessary to issue the visa:

- a) Visa application form (available at the Brazilian Consulate in student's home country);
- b) Acceptance Letter from UFPE;
- c) Passport valid for at least 6 months; If the names of the parents do not appear in the Passport, the interested party must present an additional document in which the information is available.
- d) A recent picture, size 3x4 cm in a white background;

- e) Consular fee (check directly at the Consulate in the student's country, since it can change in each country)
- f) Proof of means of subsistence in Brazil, made through the term of responsibility of another person with a notarized signature, and / or proof of a scholarship with sufficient amounts for this purpose, and / or proof of financial capacity to remain in Brazil during the period of study;
- g) Certificate of good criminal record issued less than 3 months ago by the responsible local authorities;
- h) Authorization term signed by the parents, in the case of underage students, as well as indication of the person that will be responsible for the minor in Brazil, with signature recognized

in notary's office.

- i) Proof of enrollment in your home institution.

Some of these documents may not be necessary or additional ones may be requested, so the student must always get in touch with the consulate of his/her country in order to obtain an updated list of documents necessary for obtaining the student visa.

[Click here to see where to find a consulate in your country.](#) Just click on your country and then on “rede consular do Brasil” (Brazilian consular network) to access the address, telephone, email and website of the Embassy or Consulate available.



Photo: Arthur de Souza (Folha de Pernambuco)





A photograph of four young women standing together and smiling. The image is overlaid with a teal color. In the bottom left, the text "After your arrival" is written in white on three stacked teal rectangular backgrounds.

**After  
your  
arrival**





# Arriving In Brazil

*Class of 2016 at Marco Zero*

## WHEN TO ARRIVE AT UFPE

We recommend that the student arrives at UFPE at least **15 days** before the beginning of the classes so that they can have enough time to deal with enrollment and Policia Federal procedures and settles in his accommodation. It is also important to be here to take part in the welcoming events that DRI organizes for the international exchange students that arrive each semester, and usually happen on the week before the classes start.

## AT THE AIRPORT

During international flights, all foreign passengers receive a document for entry into Brazil, which should be completed and presented to the Federal Police at the time of landing. This procedure is required to register the arrival in Brazilian territory and later to legalize their stay in Brazil.

Again, we would like to remind you that the student must not leave his country before receiving the visa.

We suggest students to have a previous reservation in some type of accommodation before arrival, either temporary or permanent (see the item “Accommodation” on the next chapter).

The safest way to leave the airport is to take one of the registered taxis. There are taxis available at all times and it is possible to pay for the transfer beforehand, in the airport, with either cash or credit cards. By proceeding this way, the student avoids misunderstandings.

If you are staying at a hotel, there are no problems regarding the time of arrival. If you are staying at a hostel or host family, it is better to inform them your time of arrival and plan in advance the best way to get there.

If your luggage does not arrive with you, you should make a formal written complaint to the airline company. Generally, there is a counter for this kind of complaints in the area where you claim the baggage. Your luggage will be delivered to the address you provide.

Students can exchange currency at the airport at the Câmbio Confidence which is opened 24 hours a day or at the Banco do Brasil agency opened from Monday to Friday from 10 am to 4 pm. Depending on your type of credit card, you will also be able to cash some money at the ATMs of the Banco do Brasil. However, if possible, it would be wise to bring some cash with you in the local currency.

There are also currency exchange offices in all of the malls in Recife.





# Procedures at UFPE

## REPORTING AT DRI


Once you arrive and settle in, you must go to the International Office on the date appointed by the Incoming Mobility Officer, to fill out an international student form, participate in the welcoming event and receive information on how to properly register for the courses.

You should bring a copy of your passport (identification page and the visa), and a copy of the International Health Insurance. These copies are essential in the enrollment process.

After that, the International Office will issue a permit for registration at the University and an authorization for the Portuguese Language Course for Foreigners (more information on the next topic).

With this authorization for registering and the passport, the student should proceed to the Corpo Discente (Student Body) to acquire authorization for registering, and take this document to the Undergrad Course to confirm the subjects/courses and receive an authorization from the Coordinator. The student should then go back to the Corpo Discente to confirm his enrollment.

It is important to arrive before the date classes begin to deal with the enrollment. Even though the student has made a study plan before arrival, only after he arrives he will be able to confirm that all of the subjects are available and that the hours do not clash. You can solve this kind of problem until the end of the enrollment modification deadline, which usually ends 15 days after the beginning of the classes.

The International Office is located on campus, on the first floor of the Rectory Building. Hours: Monday to Friday from 7:30 am to 7:30pm. 

## LIBRARY REGISTRATION

The UFPE has an Integrated Library System (SIB) composed of 13 libraries: one in each Academic Center of the institution + the Main Library.

In order to be able to borrow books from the libraries, the student will have to go to the User Support Division (DAU) of the Central Library (BC), with an official document with photo (Passport or National Migration Registration Card - CRNM) to perform the following procedure:

1. Confirm and update your personal data in Pergamum (library management program of the Integrated Library System - SIB / UFPE);
2. Register access password;
3. Perform the biometric registration

After completing this registration, the user can already use the loan services, as well as check their loan history in the libraries, renew the borrowed material and reserve books through the internet.

## Nada Consta (clearance certificate)

At the end of the interchange period, it will be necessary to request a clearance certificate from the SIB / UFPE to be able to receive any official documentation, such as your transcript of records, issued by the Student Body, Statements of end of course, participation in academic activities, or similar documents. The document should be requested at the User Support Division - DAU, located on the ground floor of the Central Library.

More information: 2126-8664  
bcufpe@ufpe.br



## WI-FI ACCESS

The UFPE has a Wi-Fi network throughout the Campus, "Conecta UFPE". To be able to access the service it is necessary for the international student to come to the International Affairs Office in order for him to register a login and a password.

## PORTUGUESE CLASSES

The UFPE Language and Culture Center (NLC) regularly offers a Portuguese course aimed at foreigners with 3 levels of proficiency. All **undergraduate** exchange students will be able **to enroll for free in the** course through a statement issued upon their arrival by the International Office. It will be necessary to pay only the registration fee of approximately R\$ 25.00.

**Postgraduate** students will have to pay a fee of R \$ 525.00 for the whole semester.

UFPE's Languages Centre - Languages Without Borders (NucLi) also offers short term free courses of Portuguese as a second language.

More information:

NLC - [nlc.ufpe@outlook.com](mailto:nlc.ufpe@outlook.com) / +55 81 2126.8961

NucLi - [contato.nucLi.ufpe@gmail.com](mailto:contato.nucLi.ufpe@gmail.com) / +55 81 3879.3104

## "SOCIAL NAME"

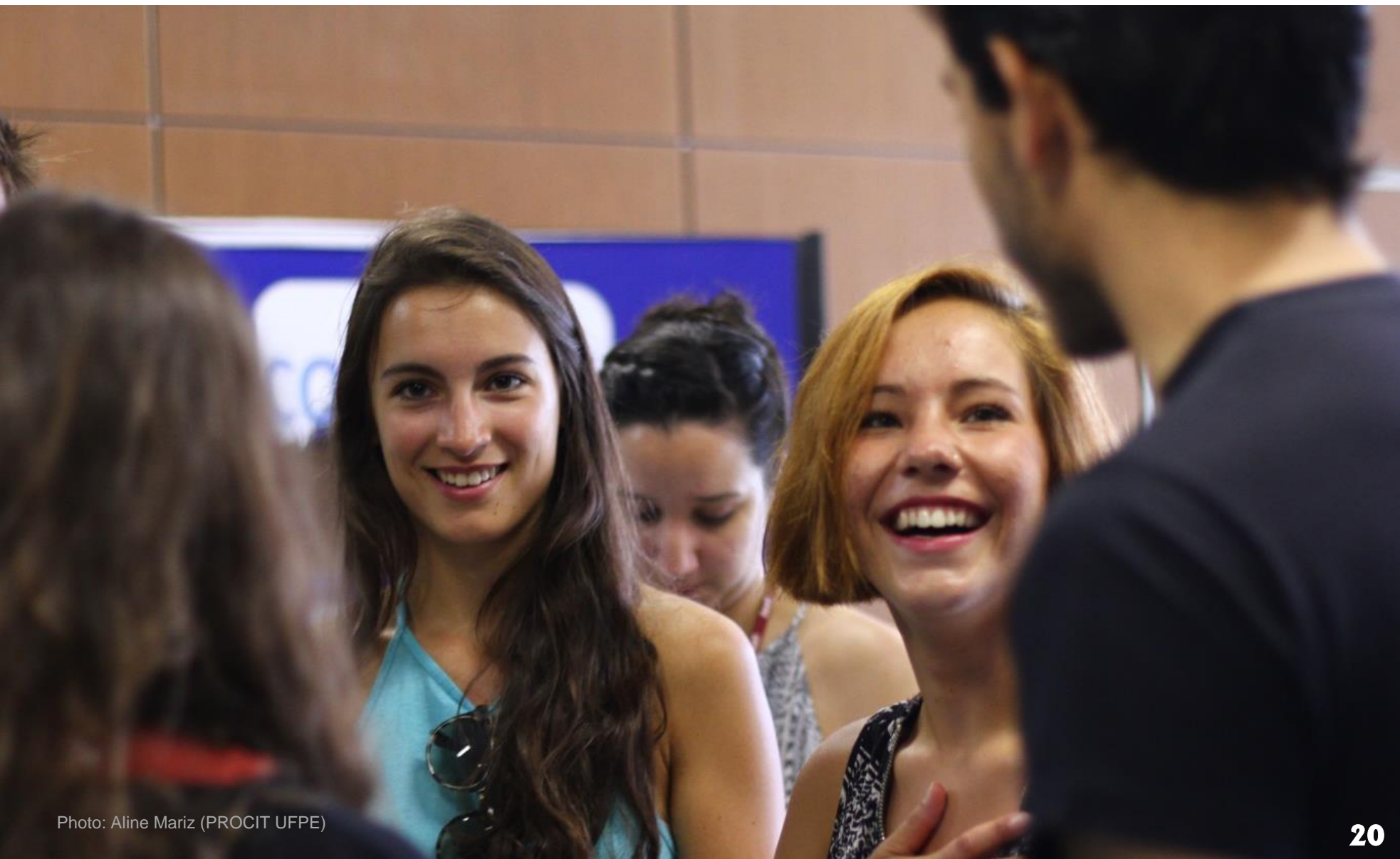
Social Name is the alias by which transsexual people, transvestites or any other gender prefer to be called daily, in contrast to the officially registered name, that does not reflect their gender identity.

The UFPE has a **LGBT Rights Office**, responsible for the implementation of UFPE's "LGBT Policy", whose main objective is to help in the integration and permanence of the LGBT community in UFPE. Among the office's activities, there is the **#MeuNomeImporta** (My name matters) campaign.

Since 2016, an ordinance guarantees the use of the social name in all documents of internal use of the institution, including the transcript of records and the attendance list, respecting the privacy and self-denomination of each one. If you wish to request the use of your social name, you should look for the LGBT Rights Office to get information on the process.

More information:

[diretoria.lgbt@ufpe.br](mailto:diretoria.lgbt@ufpe.br) / + 55 81 2126.3101







### **BEFORE RETURNING TO YOUR HOME COUNTRY !**

There are many things to do when you come to Recife to live and study, but there are also many things to do before returning to your country. Some procedures that must be remembered:

- Try to take back with you your transcript of records, if possible; You must go to the Corpo Discente (Student Body) to request it. If it is not possible to take your grades back with you, ask the International Office to do so later by email;
- Request your professors' emails, in case you need some information later;
- Close your bank account, if you had one;
- Close your Internet, telephone, cable television, electricity and water accounts, if you had any;
- Return books borrowed from UFPE's libraries



# Organizing your life in Recife







# Legal Procedure

## POLICIA FEDERAL REGISTRATION

Every foreign student must present themselves at the Federal Police within **30 days** after arriving in Brazil to regularize their status as a student and obtain the National Immigration Registry (Carteira de Registro Nacional Migratório - CRNM), a physical document identifying foreigners registered in Brazil.

At the moment of registration, the Federal Police will define your period of stay. If the foreigner needs to stay longer in the country, they should request an extension at least 30 days before the expiration date of the CRNM.

### Address

The process of registration / renewal of the CNRM must be done personally, at the Federal Police unit of Recife Airport, which is open from 09:00 to 15:00.

*Praça Ministro Salgado Filho, Imbiribeira, Recife – PE*

How to arrive?

## Contact Information

(81) 3322- 4950 / 3322-4951 / 3322- 4948  
 estrangeiros@dpf.gov.br

## HOW TO ISSUE THE CNRM

### Steps

1. Fill in this online form.

2. Gerar a GRU (Fee).

In the space **Endereço** you must provide your address in Recife.

In the space **Unidade Arrecadadora** you must choose the option : PE – Superintendência Regional no Estado de Pernambuco.

**Código Receita STN: 140120 - Emissão** de Carteira de Registro Nacional Migratório - R\$204,77

**PS:** It may be necessary for you to download and install the “Digital Certificate” to be able to generate the fee.

3. Schedule a visit to the Federal Police. You must not go to the Federal Police Office without booking an appointment. Fill out your form in advance and access the website, from Monday to Friday at 12 a.m., to request the appointment

Every day, at 12 a.m., the Federal Police releases new slots, so you can check daily if an available date has opened. Do not miss the appointment scheduled! In case of any impediment, the appointment can be canceled and rescheduled on the same site.

**PS:** In case the links above are unavailable, go to the Polícia Federal website - <http://www.pf.gov.br/> - Choose the option “Imigração” > “Carteira de Registro Nacional Migratório”.

Steps 1. “Preenchimento do formulário”, 5. “Para gerar a GRU” and 2. “Verificar se existe agenda disponível”





### Documents required by the Federal Police

- Original Passport (the identity document is accepted for nationals of Argentina, Uruguay, Paraguay, Chile, Bolivia, Peru and Colombia);
- Photocopy used pages of your passport, including the original visa application (or the ID, in the case of the countries mentioned above);

- Electronic form and proof of scheduling a visit to the Federal Police
- Consular visa obtained and the original visa application form;
- Two recent 3×4 photos with white background;
- Proof of payment of the fee (GRU)
- Copy of the entrance card

**PS:** The requested documents and fee values may change, so it is always important to **check** for any changes.



# Other documents



## OBTAINING A CPF

CPF (Cadastro de Pessoa Física) is a personal document necessary for procedures like opening a bank account and registering for a few public and private services.

It works as a database that is maintained by the Secretaria da Receita Federal do Brasil (RFB), that holds personal information of all those that are registered.

To obtain the CPF the student must go to an agency of Banco do Brasil or Correios (Post Office) with his passport and the protocol that proves you have requested your Carteira de Registro Nacional Migratório (CRNM) at the Federal Police Office (check previous page).

You will receive a tax of approximately R\$6,00. After paying the tax you must go to the Receita Federal Office, where you will provide the following documents:

- Passport;
- Receipt of paid fee (R\$ 6,00);
- Proof of residence in Brazil issued in the last three months;
- Carteira de Registro Nacional Migratório (CRNM) or the protocol of its request at the Federal Police Office.

## STUDENT CARD

The Student ID is made at the beginning of each semester in all of UFPE's Academic Centres. After that period, the student should go to the União Nacional dos Estudantes (UNE), located at Rua do Hospício 382, Boa Vista (downtown). UNE is open from 7:30am to 5pm.

You will need a recent 3x4 photo, proof of enrollment at UFPE (original register confirmation or a declaration from the university), and your passport with a photocopy of your identification and visa or the Cadastro de Pessoas Físicas (CPF).

The student ID costs around R\$ 15.00 and it is payable at UNE. This ID will allow students to pay half entrance at cinemas, theaters and concerts, besides being a **compulsory** document to obtain the Transport Card (VEM) with discount for student.

More information: +55 81 3221 9698  
portaldameiaentrada@une.org.br

## BANCO DO BRASIL

Foreign students are allowed to open an account at Banco do Brasil. The bank is open from 10am to 4pm. It is required that the person has a CPF. Additional documents, such as a proof of enrollment at UFPE, might be requested.

## VEM CARD (PUBLIC TRANSPORTATION)

VEM (Vale Eletrônico Metropolitano) is the card of the electronic bus ticket service of the Recife Metropolitan Area. The whole process of buying credits can be completed through internet and the cards can be recharged inside the buses.

The VEM card enables the students to pay half prices in all public transportation. The necessary documents to obtain the card are:

- Student Card (of the current year);
- Passport;
- Picture (taken at the moment of register);
- Certificate of Enrollment at UFPE (of the current semester)

The student must go to the "Posto de Emissão do Cartão VEM Estudante" located at Rua da Soledade, 259 na Boa Vista, between Av. Conde da Boa Vista and Rua do Progresso.

The opening hours for the first registration are, from Monday to Friday, from 8.30am to 5.30 pm.

To proceed with recharging the student must use one of the electronic self-serving terminals available on the same building, from Monday to Friday, from 7am to 7:30pm. It is also possible to do it online, on the website [www.vemgranderecife.com.br](http://www.vemgranderecife.com.br).

You must first click on the icon "Vem Estudante" and then on "Vendas OnLine". You will be requested to fill in your personal information to be able to buy credits online. This will only be necessary on the first time you use this service. After you finish registering, print the bank slip and pay it in any Casa Lotérica, which has many agencies throughout the city, or in any Caixa Economica Bank Agency (there is one right beside the Rectory Building). The credits will be available in the next 48 hours.

More info:  
0800 081 0158 or (81) 3182-5551 (in case the card is lost or stolen).





# Transport

The easiest way to get around Recife is by using public transportation.

Taxis are more expensive, but some mobile apps offer discounts for cash payments. When going out at night, it would be interesting to opt for this type of transportation. The UBER service is also available almost everywhere in the city.

In some parts of the city (and inside the campus), it is possible to find public bicycles for hire (Bike PE), but most of the city does not have cycle paths, and transit between cars can be dangerous.

On Sundays and national holidays, from 7:00 am to 4:00 pm, several streets of the city have a space reserved for bike traffic.

The route cuts 31 neighborhoods of the city, connecting the North, South and West zones, totaling 36.5 kilometers of exclusive lanes. The point of convergence between the three routes is the Marco Zero, in the city centre. Each day of “Ciclofaixa”, an average of 17 thousand people pedal by the landscapes of the city.

There are bus companies that offer trips to other cities in the state or other beaches in the Northeast region.

Although a large part of the “recifenses” choose cars as their preferred mean of transportation, due to the high prices of cars and gasoline, mobility students rarely choose to purchase this type of vehicle.

If you choose to rent a car to travel to other cities, it is possible your international driver license to be used in Brazil for up to 180 days, but only when conventions, international agreements or the adoption of reciprocity allows the local Traffic Department (DETRAN – PE) recognize it.

More information on the validation process of your driver license and the countries that have valid agreements with Brazil are available on the [Detran-PE website](#).

More information about Bike PE and how to rent bikes on the [Bike PE website](#).







## IN THE CAMPUS

The UFPE campus is located on BR-101, in an area that is easily accessible to visitors coming from any part of the metropolitan region or the countryside.

### Public Transport

Several bus lines pass through the Campus. Track the buses in real time through the app [Citta Bus](#).

### Bike

BikePE, a project we mentioned on the previous page, has some rental points within UFPE, such as NIATE - Area II,

CCS and the University Restaurant. See the campus map and [Bike PE website](#) for more information.

### UFPE's Campus Bus

The UFPE offers a free bus that makes the internal circuit inside the campus of the university. It runs Monday through Friday from 7:10 p.m. to 10:05 p.m. The terminal - the exit site of each round - is the Rectory Building. Bus stops can be checked on the campus map at the end of this Guide.

#### Circular UFPE – Female Student House (Through Caxangá Overpass)

Leaves at: 7h10, 7h30 (Caxangá), 8h30, 9h30, 10h30, 11h30, 12h10 (Caxangá), 13h30 (Caxangá), 14h30, 15h30, 16h30, 17h (Caxangá), 17h30 (Caxangá), 18h15, 19h40 (Caxangá), 21h05 (Caxangá), 21h40 (Caxangá) e 22h05 (Caxangá).

#### Circular UFPE – Campus (Through General Polidoro Street)

Leaves at: 7h30 (Polidoro), 11h30, 12h10, 12h30 (Polidoro), 14h30, 16h, 16h30, 17h, 17h30 (Polidoro) e 21h30 (Polidoro).



# Telephone



Although, during the Confederations Cup, the World Cup and the Brazilian Olympics, it was established that for a foreigner to acquire a prepaid phone chip, he would need only his passport, the most common report of our foreign students is that it is only possible to activate the telephone line with the CPF number. It would therefore be necessary to acquire the document before

purchasing the chip. There are four main operators in the country: Vivo, Claro, Oi and Tim. It is easy to find shops of all of them in the malls.

If the student opts for prepaid plans, the recharge of credits can be carried out in several places, such as supermarkets, lottery houses and magazine stands.

In both prepaid and postpaid plans, there are a number of options to consider. To communicate with your home country, we recommend using Skype or other forms of online communication, since international calls tend to be more expensive.

Brazil country code: +55  
Recife area code: 81





# Accommodation

## PRACTICAL INFORMATION:

1. The tap water here is **NOT DRINKABLE**
2. We do not throw paper in the toilet. This may sound strange, depending on where you come from, but it's connected to the basic sanitation system and the local plumbing.
3. It is rare that buildings have communal laundries, so check if the apartment you intend to rent has a washing machine. Since the weather is warm throughout the year, apartments do not usually have dryers, only clotheslines.

## HOW TO FIND A PLACE TO RENT?

This will perhaps be the most difficult task during your mobility. Although UFPE does not have a student residence nor provides accommodation for international students, we offer a list of accommodations that have been inspected by our Student Assistance Office to facilitate your arrival. Check the **Accommodation List** in the end of this guide.

It would be good option to rent one of the lodgings available in the List at least for a few days after your arrival, because that would give you time to search calmly for a definite place after your arrival, since it is not advisable to close a contract without visiting the apartment in person.

Rental conditions vary depending on the quality and location of the accommodation. Usually the rent is done without much bureaucracy - the passport and a proof of enrollment at UFPE being sufficient. In rare cases they ask for a CPF number.

The neighborhoods of Boa Viagem and Jaqueira and surroundings have the most expensive square meter of the city, which means that they have the most expensive rent, but also several options of furnished flats.

The Iputinga and Cidade Universitária neighborhoods are the closest to the university, which is why many students choose to share houses and apartments here. It is good to talk to fellow students about this possibility. Another option would be to talk to international students that are leaving UFPE to see if the accommodation they occupied is available or how they found the space.

Several sites gather rental offers in the city, some of which are listed below. It would be interesting to search for some properties previously and book visits to those places after your arrival in Recife. If possible, take a local friend with you to check the premises and close the contract.

Remember to consider the amount of money you will spend commuting to UFPE on your monthly expenses to evaluate whether the place has a good cost / benefit ratio. **We do not recommend depositing amounts in advance.**

Some links to start your search:  
[AirBnB](#) | [Lugar Certo](#) | [Viva Real](#) |  
[Zap Imóveis](#) | [OLX](#)

## FACEBOOK AND SOCIAL NETWORKS

While it is not advisable to close deals through these channels, you can use them not only to search for accommodations, but also to advertise that you are looking for somewhere to stay. Maybe some friend of yours knows someone here in Pernambuco or can share the post to see if a friend of his does. Since you are coming from an affiliated university, it is also possible that some of our students are currently in your institution and can help you in this search.





# Culture and leisure





Brazil, officially “Federative Republic of Brazil”, is the largest country in South America, the fifth largest in the world in territorial area and sixth in population, with more than 200 million inhabitants.

The country, often remembered for its soccer and the carnival, is in fact one of the most multicultural and ethnically diverse nations in the world, as a result of the strong immigration from various places in the world.

The vast territory is divided into 26 states and 5 geographic regions (North, Northeast, Midwest, South and Southeast), each with its own cultural manifestations and cuisine.

Brazil is plural, and we hope you will discover a good part of its attractives during your stay here.

**SOME FACTS ABOUT BRAZIL**

- The Brazilian GDP is the eighth largest in the world
- We have 18 of Humanity’s Ecological and Cultural Heritage Sites, two of them located here in Pernambuco: the Historical Center of Olinda and the Island of Fernando de Noronha. In addition to that, we have 5 of Humanity’s immaterial heritage treasures, such as Frevo, a typical Pernambuco rhythm.
- The Brazilian coastline has more than 7 thousand kilometers of beaches.
- The Amazon Rainforest is the largest oxygen producer in the world, accounting for almost 1/3 of what we breathe, and one of the planet's main sources of fresh water. The Amazon River has 20% of all the fresh water in the world.
- Brazil is a secular country, but it is religiously quite diverse and Brazilian law prohibits any kind of intolerance. Several beliefs coexist and merge with the so-called religious syncretism, but most of the population is Christian, which gave Brazil the title of the world's largest Catholic country (138 million believers).  
In time: The first synagogue of the Americas, the Kahal Zur Israel Synagogue, built in 1636 in Recife. The original building remains intact to this day.
- The largest Japanese community outside of Japan is in Brazil.
- The country occupies 47.3% of all of South America and borders with almost all the countries of the continent, except with Ecuador and Chile.



# Recife



Photo: Américo Nunes

Here are a few facts about Recife:

- Population: 1.608.488
- Average annual temperature: 25.8 °C (78.4 F)
- Fifth-largest metropolitan area in Brazil
- Almost 500 years old
- Recife is the third largest gastronomic center in Brazil
- It is the home of the biggest street carnival in the world – Galo da Madrugada – which gathers 2.5 million people in the city centre
- Brazil's Capital of Shipwrecks (17 sunken ships are available for visitation)
- Also known as “Brazilian Venice” and “Brazilian Amsterdam”, Recife is cut by rivers and canals
- Near Olinda (considered as Humanity’s Cultural Heritage by Unesco.)
- Near Fernando de Noronha (Humanity’s Natural Heritage), Carneiros, Pipa and Maragogi, elected by Tripadvisor as some of the most beautiful beaches in Brazil.
- Our airport was elected by the passengers as the best airport in the country multiple times and is currently considered the 7th best airport in Latin America by the World Tourism Organization
- Influenced by the native, Portuguese, African, English And Dutch cultures.



# The recifense



## ... is welcoming, or “gente boa” (“good people”), as we say here

The recifense is always ready to help, especially when he notices that the person is not from here. He is also always excited and ready to party. The combination of these attributes granted Recife the title of the most welcoming and hospitable city of the World Cup in 2014. 80% of the people who came to the city for the event said they intend to return.

The recifense is very open, spontaneous and talkative. It's easy to befriend him. He also has the custom of embracing and greeting with kisses (2, one on each side of the face). He is always open to meeting new people and to connect different groups of friends.



## ... is megalomaniac, and that's already turned into a joke.

We have the habit of saying that everything here is the biggest or the best in the world: We have "the largest carnival parade in the world" (which is true - Galo da Madrugada); "the largest mall in the country" (which was once true); and even the "largest straight avenue in Brazil" (which apparently was never true). We even say that the sea is a union of the Beberibe and Capibaribe rivers, which cut the city (just as a joke).

## ... affectionately nicknamed the city as Hellcife and Raincife

The joke was created to differentiate the two seasons we have in the year: heat (summer) and heat with rain (winter)

## ... loves the beach

It is rare to find a recifense that does not like the beach. Just stroll along the Boa Viagem beach on a weekend to see how many people you will find exercising, eating, drinking and sunbathing. Even without being able to bathe (in areas demarcated as ones of risk of shark attack), the recifense is always enjoying the perks of living in a seaside town.



## ... has his own language

Some of the most commonly used slang are:

- Massa – something good / cool
- Mangar – make fun of someone
- Arretado – either something really good or to be angry at something/someone
- Oxe / Oxente – interjection used to indicate astonishment (like “what?”)
- Visse? – used at the end of the sentence to confirm if the person has heard what was said.



## ... knows by heart the Hymn of Pernambuco

The anthem was already known, but when it was re-recorded in local rhythms like frevo and forró by famous local artists, such as Alceu

Valença Dominginhos, the hymn became one of the most well-known songs in the whole state.

“Salve, ó terra dos altos coqueiros, de belezas soberbo estendal, nova Roma de bravos guerreiros, Pernambuco imortal! Imortal!”

## ... uses Whatsapp

You might as well install this instant messaging application on your mobile right away... it is the most used social network in Brazil



## ... does not smoke indoors

A very big cultural difference in Brazil, especially if you come from Europe, is that since 2014 the country has adopted a federal law that prohibits smoking indoors, in public or private spaces, including halls and corridors of condominiums, restaurants and clubs - even the ones that are only partially enclosed by a wall, partition, ceiling or awning. Smoking is allowed only at home, in outdoor areas, parks, squares and spaces similar to those ones.





Marco Zero



Photo: Embratur / Portal da Copa

### MARCO ZERO SQUARE

It is from the center of this square that all the distances of the roads of Pernambuco are measured. A good part of the popular celebrations are held in it. It is the focal point of the Multicultural Carnival of Recife and houses the Crafts Center of Pernambuco.

### BOM JESUS STREET

This street is considered the oldest street in Recife and received its name because of the arch that existed there and functioned as the gateway to the city. On Sundays you can check the local handicraft fair. In this street you can also find the Kahal Zur Israel Synagogue and the Giant Dolls Museum (bonecos gigantes).

### AURORA STREET

Located on the left bank of the Capibaribe River, it gathers some of the oldest buildings in the city and is one of the most beautiful views of the capital of Pernambuco.

# What to visit in Recife

Below we list some of the places you can visit while in town ...

### BOA VIAGEM BEACH

This urban beach has 8km and offers a quiet sea with natural pools and warm waters. Its reefs are part of the select list of Brazilian Geological Sites and its waters and sands are permanently monitored and free of pollution. It is important to bathe only in the areas where you are allowed to do so.

### Shark Attacks !

Although the coast of Recife is frequented by lots of people interested in bathing in the ocean, it is important to observe the signs warning of areas where swimming is not allowed. Since some areas have a history of shark attack, all water activities have been **prohibited** in their vicinity. In the last 25 years more than 60 attacks have been recorded, 1/3 of them fatal.

Photo: Hugo P. Kuklinski



Boa Viagem



## MUSEUMS

### RICARDO BRENNAND INSTITUTE

Elected the best museum in South America by Tripadvisor in 2017, the space has the replica of a medieval castle, as well as a gallery and library. The permanent exhibition of weapons and armor is a must.

### KAHAL ZUR ISRAEL SYNAGOGUE

It is the first synagogue of the Americas, founded in 1636, during the period of the Dutch occupation. Today it functions as a Jewish center, with archaeological excavations, exhibitions and documents about the Jews in Pernambuco, depicting an important period in the history of the State.

*Photos of Brennand Institute*

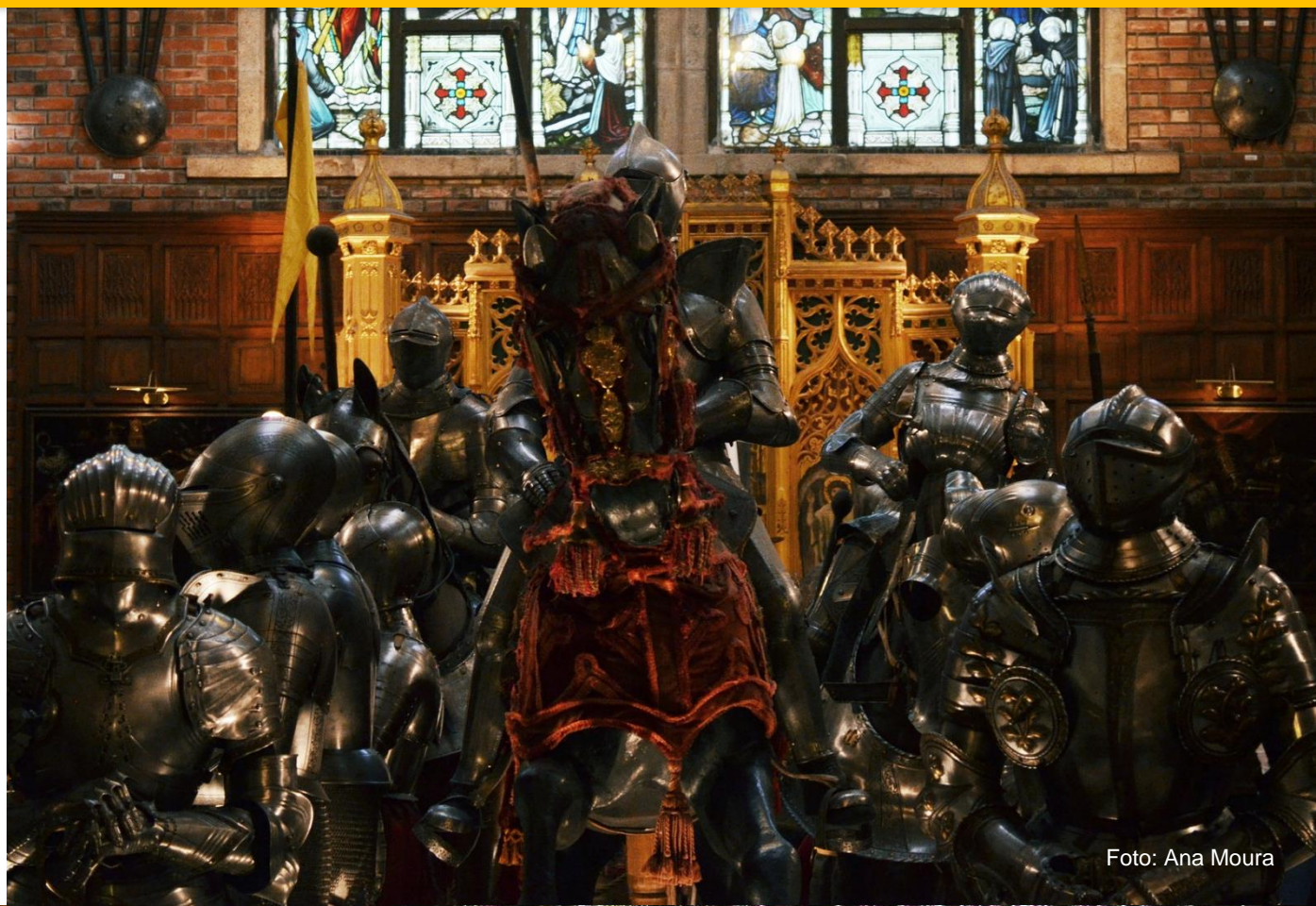


Foto: Ana Moura



Foto: Janine Moraes/MinC





## FREVO PALACE

Located in the city centre, it is a place that proposes the perpetuation of the rhythm of Frevo, Humanity's Immaterial Cultural Patrimony. The space gathers the history of the most famous cultural manifestation of the Pernambuco state through the tale of his memories. They offer classes on music and dance.

Frevo Palace



## CAIS DO SERTÃO

This space brings references to the “sertaneja” culture, typical of the Northeast region, with sensorial experiences and innovative architecture. The interactive museum has a collection about Luiz Gonzaga, a Brazilian composer and singer. Known as the King of Baião, he was one of the most complete, important and inventive figures of Brazilian popular music.

Below : Cais do Sertão



## FRANCISCO BRENNAND WORKSHOP

This site contains the collection of ceramics and paintings by Francisco Brennand, one of the most renowned local artists. Surrounded by the Atlantic Forest, the area has spaces such as the Accademia (gallery), Amphitheater, Sculpture Hall, Central Temple, Temple of Sacrifice, Chapel and a Cafe, as well as beautiful gardens designed by Burle Marx.

Bom Jesus Street



Photo: Abdias Jr





Olinda



# In the neighbouring area

## HISTORIC CENTRE OF OLINDA

Also called Cidade Alta (Upper City), it covers a historic area of the Brazilian municipality of Olinda. Almost a third of the total area of the city is listed as Humanity's Cultural Heritage.

In addition to the buildings dating from the sixteenth century and the famous cobbled hillsides, the Cidade Alta gathers some of the most beautiful and old churches of the state. It is impossible to come to Pernambuco and not to eat a tapioca - another immaterial patrimony - in Alto da Sé. The view from there is also one of the most famous of Pernambuco. Four million people and hundreds of giant dolls circulate through the area during Carnival.

## PORTO DE GALINHAS BEACH

Located just 50km from Recife, Porto is the busiest beach in the region and has a wide range of restaurants, bars, hotels and even nightclubs. It has been voted 10 times the most beautiful beach in Brazil by the Travel and Tourism Magazine. It is famous for its natural pools.

## MARACAÍPE BEACH

Located just after Porto de Galinhas, it is a quiet region that gathers surf lovers due to its waves, that reach heights up to 2m. At the Pontal you can bathe at the mouth of the river and take raft trips to the mangue, to observe seahorses.

## CARNEIROS BEACH

Also elected multiple times one of the most beautiful beaches on the planet, Carneiros houses the famous Chapel of St. Benedict, built in the eighteenth century. The beach has a rustic atmosphere and natural pools of warm and crystalline waters. It is site of practice of various water sports such as stand-up paddle, kayak and snorkel.

Photo: Leonardo Shinagawa



Porto de Galinhas

Photo: Rodrigo Soldon



Carneiros





Photo: Leandro Macedo Gonçalves

*Fernando de Noronha*



### **FERNANDO DE NORONHA**

Considered an Ecological Heritage for Humanity, this island gathers 14 beaches, three bays and a cove, besides areas of contemplation and natural pools. There you can do trails and boat trips and buggy, in addition to diving with sea turtles and staying side by side with dolphins.

### **BONITO**

Considered the “Capital of ecotourism” in the Northeast region, Bonito has natural reserves of Atlantic forest, waterfalls, rivers and spouts. The activities offered include tree climbing, zip-lines, climbing, hiking trails and the largest abseiling in Pernambuco (250 meters) which is in Pedra do Rodeadouro.

### **SERRA NEGRA**

The attractions range from the Cultural Pole, which brings together about 60 local artisans, to the Observation Deck, with 1000 meters of altitude, where you can see the most beautiful sunset in the region. You can also do trails, abseiling and climbing and eat some of the best regional food in the state.



# Eating

Tapioca - Alto da Sé, Olinda (the most famous one)

Photo: Cláudia Midori

Photo: É brigadeiro

Brigadeiro!

Coxinha

Brazil has a multitude of typical foods, but here in Pernambuco the thing is so serious that some of them were declared **immaterial patrimony** of the state:

- Tapioca
- Bolo de rolo (cake - guava filling is the most traditional)
- Cartola (roasted banana with cheese, cinnamon and sugar)
- Souza Leão Cake



These foods are also a must have:

- Brigadeiro (condensed milk and chocolate)
- Coxinha (fried dough with several fillings. The traditional one is chicken)
- Pão de queijo (cheese bread)
- Doce de Leite
- Romeu e Julieta (cheese and guava jam combination)
- Escondidinho de macaxeira com charque
- Cuscuz
- Feijoada
- Local fruit juices - cajá, graviola, acerola ..
- Farofa (accompanies almost everything you eat here)





## CARNIVAL

Considered the most culturally diverse carnival in the country, the carnival of Pernambuco has as main characteristic its democracy: everyone can participate in the parties, which take place on the street, without the need to pay any participation fee.

Although the feast is traditionally celebrated in February or March, from Zé Pereira's Saturday until Ash Wednesday, the "prévias" - early celebrations - begin in January.

Almost 4 million people go to the streets of Olinda and dance to the sound of traditional rhythms - frevo, caboclinho, maracatu - during the carnival holiday. On the Saturday, Recife hosts the Galo da Madrugada, considered by the Guinness Book the largest street parade in the world since 1995, annually gathering 2.5 million people. Shows by local and national artists are held free of charge in the city's various Cultural Poles.

# Popular Celebrations

Photos: Arquimedes Santos – Prefeitura de Olinda







Photo: Filipe Calmon / ANESP

## SÃO JOÃO

One of the strongest cultural manifestations in the Northeast, São João is celebrated in several cities of the State, including free concerts. June 24 is a state holiday, and families and friends gather the night before (23), light fires, play with fireworks, eat the typical foods - usually made with corn - and dance “forró”, another local rhythm. Wearing jeans, plaid clothes and braided hair are some of the dressing customs of the party.

Another tradition of São João is the “quadrilha”, a dance in pairs where a singer releases commands of the dance moves to be done.

## HOLIDAYS

Brazil has 11 national holidays, more than half of them with religious origin. The city of Recife also celebrates 3 local holidays.

Below we list all holidays in chronological order, so you can prepare your calendar.

- **New Year's Day** (January 1st)
- **Carnival** (February / March) – The date changes, but it is always celebrated from Monday to Wednesday.
- **Easter / Holy Week** (March / April) - The holiday covers Maundy Thursday (Quinta-feira Santa) and Good Friday (Sexta-feira da Paixão).
- **Tiradentes** (April 21st)
- **Labor Day** (May 1st)
- **Corpus Christi** (May / June) – The date changes
- **São João** (June 24th)
- **Nossa Senhora do Carmo** (July 16th)
- **Independence Day** (September 7th)
- **Nossa Senhora Aparecida** (October 12th)
- **Day of the Dead** (November 2nd)
- **Proclamation of the Republic** (November 15th)
- **Nossa Senhora da Conceição** (December 8th)
- **Christmas** (December 25th)

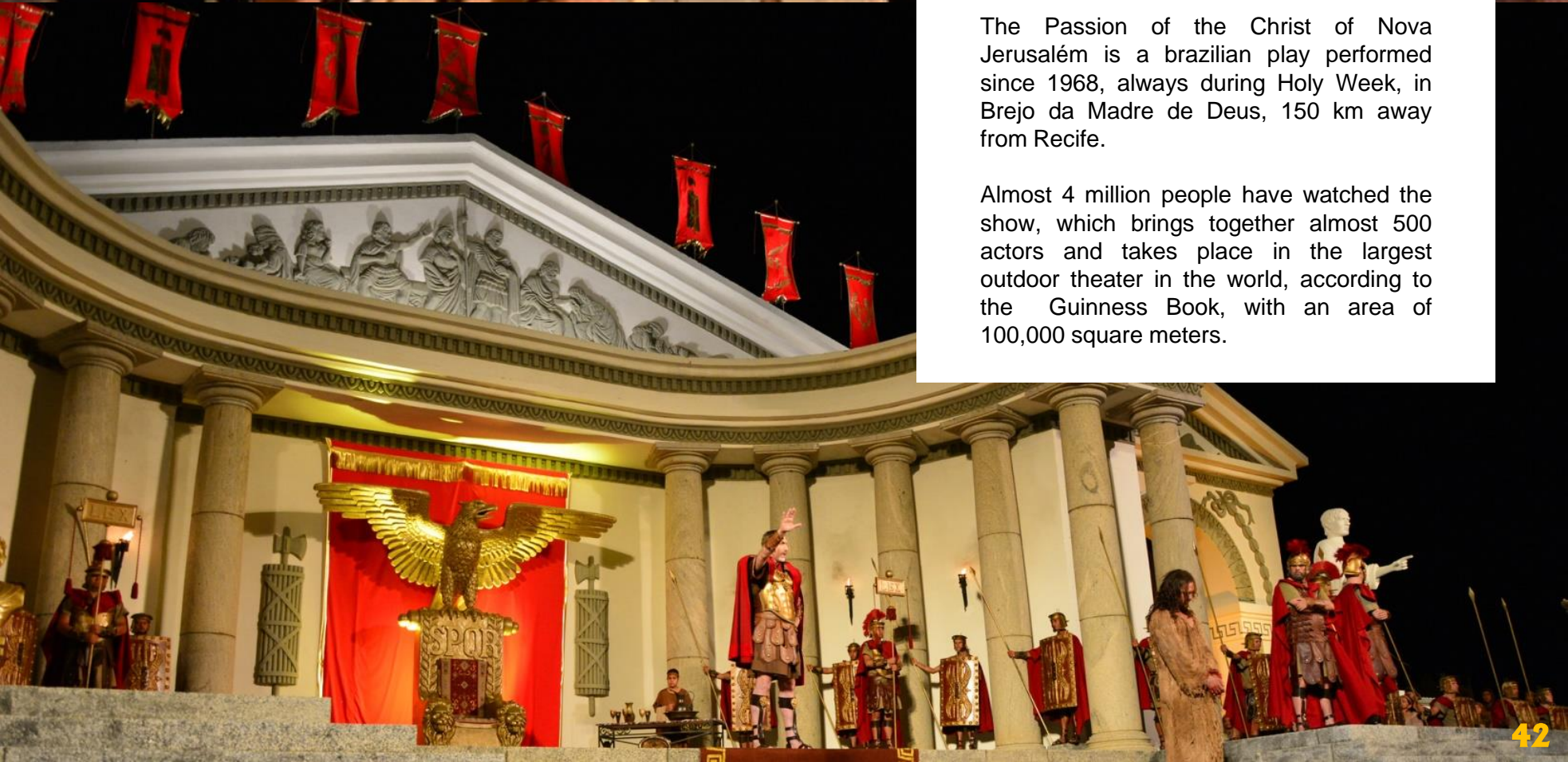




### THE PASSION OF THE CHRIST

The Passion of the Christ of Nova Jerusalém is a Brazilian play performed since 1968, always during Holy Week, in Brejo da Madre de Deus, 150 km away from Recife.

Almost 4 million people have watched the show, which brings together almost 500 actors and takes place in the largest outdoor theater in the world, according to the Guinness Book, with an area of 100,000 square meters.





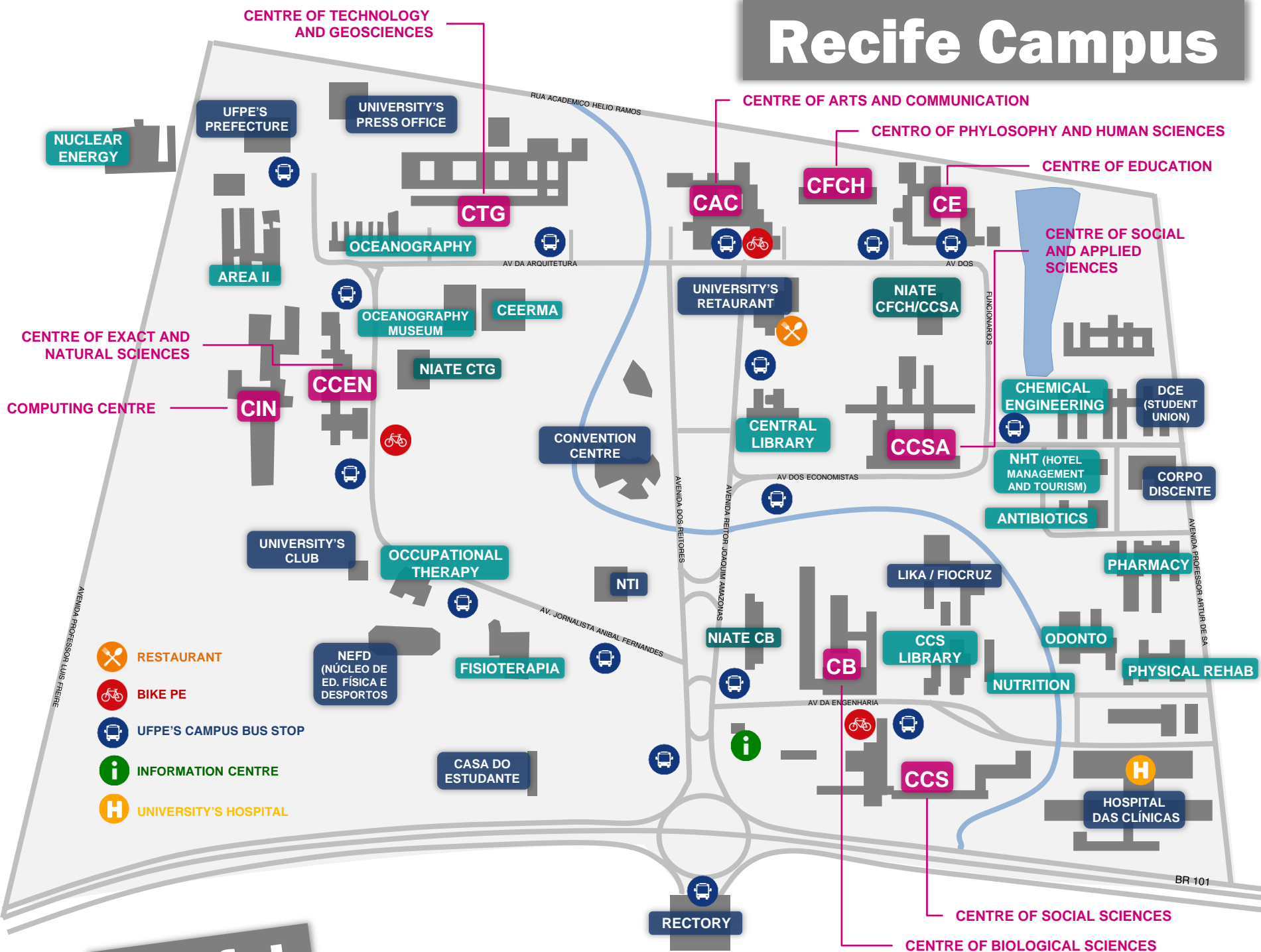


# Utilities



# University's Map

## Recife Campus



## Useful Phones

Firefighters **193**  
 Ambulance **192**  
 Military Police **190**  
 Civil Police **197**  
 Tourist Police Office in Recife **3322-4867**  
 International Affairs Office UFPE **2126-8006 | 2126-7021**



# Courses: Undergraduate

## LEGENDA

TT = Teacher Training  
BD = Bachelor's Degree

### CENTRE OF ARTS AND COMMUNICATION (CAC)

**[www.ufpe.br/cac](http://www.ufpe.br/cac)**

- Architecture
- Cinema and Film
- Dance – TT
- Design – TT
- Graphic Expression – TT
- Information Management
- Journalism
- Languages
- Languages – TT in French
- Languages – TT in English
- Languages – TT in Spanish
- Languages – TT in Portuguese
- Languages – TT in Brazilian Sign Language (Libras)
- Library Studies
- Music – Instrument
- Music – Singing
- Music – TT
- Advertising and Publicity
- Radio, Tv and Internet
- Theater
- Visual Arts

### CENTRE OF HEALTH SCIENCES (CCS)

**[www.ufpe.br/ccs](http://www.ufpe.br/ccs)**

- Dentistry
- Medicine
- Nursing
- Nutrition
- Occupational therapy
- Pharmacy
- Physiotherapy
- Physical Education – BD
- Physical Education – TT
- Speech and Language Therapy

### COMPUTING CENTRE (CIN)

**[www.cin.ufpe.br](http://www.cin.ufpe.br)**

- Computer Science
- Computer Engineering
- Information Science

### CENTRE OF SOCIAL AND APPLIED SCIENCES (CCSA)

**[www.ufpe.br/ccsa](http://www.ufpe.br/ccsa)**

- Accounting
- Actuarial Science
- Business and Management
- Economics
- Hotel Management
- Secretariat Training
- Social Service
- Tourism Management

### CENTRE OF PHILOSOPHY AND HUMAN SCIENCES (CFCH)

**[www.ufpe.br/cfch](http://www.ufpe.br/cfch)**

- Archaeology
- Geography – BD
- Geography – TT
- History – BD
- History – TT
- Museum Studies
- Political Science and International Relations
- Psychology
- Philosophy – BD
- Philosophy – TT
- Social Sciences – BD
- Social Sciences – TT

### Centre of Juridical Sciences (CCJ)

**[www.ufpe.br/ccj](http://www.ufpe.br/ccj)**

- Law

### CENTRE OF BIOLOGICAL SCIENCES (CB)

**[www.ufpe.br/cb](http://www.ufpe.br/cb)**

- Biological Sciences – BD
- Biological Sciences – Environmental Sciences
- Biological Sciences – TT
- Biomedical Sciences

### CENTRE OF EXACT AND NATURAL SCIENCES (CCEN)

**[www.ufpe.br/ccen](http://www.ufpe.br/ccen)**

- Chemistry – BD
- Chemistry – TT
- Mathematics – BD
- Mathematics – TT
- Physics – BD
- Physics – TT
- Statistics

### CENTRE OF TECHNOLOGY AND GEOSCIENCES (CTG)

**[www.ufpe.br/ctg](http://www.ufpe.br/ctg)**

- Biomedical Engineering
- Chemical Engineering
- Civil Engineering
- Control Systems Engineering
- Food Engineering
- Electrical Engineering
- Electronics Engineering
- Energy Engineering
- Geology
- Geomatics Engineering
- Industrial Chemistry
- Materials Engineering
- Mechanical Engineering
- Mining Engineering
- Naval Engineering
- Oceanography
- Production Engineering

### CENTRE OF EDUCATION (CE)

**[www.ufpe.br/ce/](http://www.ufpe.br/ce/)**

- Pedagogy

### DISTANCE LEARNING COURSES (EAD)

**[www.ufpe.br/cead](http://www.ufpe.br/cead)**

- Accounting
- Geography – TT
- Languages – TT in Spanish
- Languages – TT in Portuguese
- Mathematics

### AGRESTE ACADEMIC CENTRE (CARUARU)

**[www.ufpe.br/caa](http://www.ufpe.br/caa)**

- Business
- Design
- Chemistry
- Civil Engineering
- Communication – Emphasis in Social Media and Cultural Production
- Economics
- Intercultural TT
- Mathematics
- Medicine
- Physics
- Production Engineering
- Pedagogy

### VITÓRIA ACADEMIC CENTRE (CAV)

**[www.ufpe.br/cav](http://www.ufpe.br/cav)**

- Biological Sciences
- Nursing
- Nutrition
- Physical Education – BD
- Physical Education – TT
- Public Health



# Courses: Graduate

## CENTRE OF ARTS AND COMMUNICATION (CAC)

**[www.ufpe.br/cac](http://www.ufpe.br/cac)**

- Communication (M|D)
- Design (M|D)
- Ergonomics (MP)
- Human Rights (M)
- Information Science (M)
- Languages (M|D)
- Urban Development (M|D)

## CENTRE OF BIOLOGICAL SCIENCES (CB)

**[www.ufpe.br/ccb](http://www.ufpe.br/ccb)**

- Animal Biology (M|D)
- Applied Biology – Health (M|D)
- Biological Sciences (M|D)
- Fungi Biology (M|D)
- Genetics (M|D)
- Industrial Biotechnology (M)
- Plant Biology (M|D)
- Physiology and Biochemistry (M|D)
- Therapeutic Innovation (M|D)

## CENTRO DE CIÊNCIAS JURÍDICAS (CCJ)

**[www.ufpe.br/ccj](http://www.ufpe.br/ccj)**

- Direito (M|D)

## CENTRO DE INFORMÁTICA (CIN)

**[www.cin.ufpe.br](http://www.cin.ufpe.br)**

- Ciência da Computação (M|D|MP)

## CENTRE OF HEALTH SCIENCES (CCS)

**[www.ufpe.br/ccs](http://www.ufpe.br/ccs)**

- Children and Adolescents Health (M|D)
- Dentistry (M|D)
- Gerontology (M)
- Health Sciences (M)
- Nutrition (M|D)
- Nursing (M|D)
- Neuropsychiatry and Behavioral Science (M|D)
- Pathology (M)
- Pharmaceutical Sciences (M|D)
- Physiotherapy (M|D)
- Public Health (M)
- Surgery (M|D)
- Tropical Medicine (M|D)

## CENTRE OF PHILOSOPHY AND HUMAN SCIENCES (CFCH)

**[www.ufpe.br/cfch](http://www.ufpe.br/cfch)**

- Anthropology (M|D)
- Archaeology (M|D)
- Cognitive Psychology (M|D)
- Environment and Development (M)
- Geography (M|D)
- History (M|D)
- Political Science (M|D)
- Psychology (M|D)
- Public Policy (MP)
- Sociology (M|D)

## CENTRE OF TECHNOLOGY AND GEOSCIENCES (CTG)

**[www.ufpe.br/ctg](http://www.ufpe.br/ctg)**

- Biomedical Engineering (M)
- Civil Engineering (M|D)
- Chemical Engineering (M|D)
- Electric Engineering (M|D)
- Energy and Nuclear Technology (with CNEN) (M|D)
- Geodesic Sciences and Geoinformation Technology (M)
- Geosciences (M|D)
- Mechanical Engineering (M|D)
- Mineral Mechanical Engineering (M)
- Oceanography (M|D)
- Production Engineering (M|D|MP)

## CENTRE OF EXACT AND NATURAL SCIENCES (CCEN)

**[www.ufpe.br/ccen](http://www.ufpe.br/ccen)**

- Chemistry (M|D)
- Mathematics (M|D)
- Materials Science (M|D)
- Physics (M|D)
- Statistics (M|D)

## CENTRE OF SOCIAL AND APPLIED SCIENCES (CCSA)

**[www.ufpe.br/ccsa](http://www.ufpe.br/ccsa)**

- Accounting (M)
- Business Management (M|D|MP)
- Economics (M|D|MP)
- Public Management focused the Development of the Northeast of Brazil (MP)
- Health Economics and Management (MP)
- Social Services (M|D)

## ABBREVIATIONS

M = Masters  
MP = Professional Masters  
D = Doctorate | PhD

## CENTRE OF EDUCATION (CE)

**[www.ufpe.br/ce](http://www.ufpe.br/ce)**

- Education (M|D)
- Mathematics and Technology Education (M|D)

## AGRESTE ACADEMIC CENTRE (CARUARU)

**[www.ufpe.br/caa](http://www.ufpe.br/caa)**

- Civil and Environmental Engineering (M)
- Contemporary Education (M)
- Economics (M)
- Production Engineering (M)

## CENTRO ACADÊMICO DE VITÓRIA (CAV)

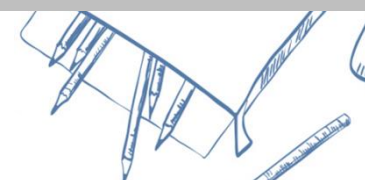
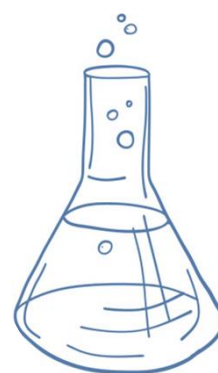
**[www.ufpe.br/cav](http://www.ufpe.br/cav)**

- Human Health and Environment (M)
- Nutrition, Physical Activity and Phenotypic Plasticity (M)

## JOINT STUDY PROGRAMMES

**[www.ufpe.br/propesq](http://www.ufpe.br/propesq)**

- Biotechnology – RENORBIO – (D)
- Environment and Development – Rede (D)
- Languages – PROFLETRAS (MP)
- Pharmaceutical Nanotechnology (UFG/UFRGS/UFSC/UFPE and others) – (D)
- Philosophy - CFCH (UFPB/UFPE/UFRN) –(D)
- Visual Arts– CAC (UFPB/UFRN) – (M)







# Accommodation List

## ACCOMMODATION WITH HOST

### Pousada dos Pinheiros

Rua Célio Regueira, 96, Cidade Universitária - Recife - PE

Details:

Near UFPE, includes WiFi and all Meals

Contact:

[www.pousadapinheiros.com.br](http://www.pousadapinheiros.com.br)

(81) 3273 1212 / (81) 99640 5848 / (81)

99632 9287

### Residência das Palmeiras

Avenida Mauricéia, 474, Cidade Universitária - Recife - PE

Details:

Near UFPE, furnished, has private bathrooms, Internet and Tv and study rooms.

Contact:

[www.residenciadaspalmeiras.com.br](http://www.residenciadaspalmeiras.com.br)

(81) 3031-6219

### Casa de Estudante Rosa Maria

R. General Cândido Borges, 206, Iputinga, Recife - PE

Details:

Fully equiped shared kitchen, Wi-fi, furnished rooms. Cleaning, washing (clothes), energy and water bills included.

Contact:

[terezasiciliani@outlook.com](mailto:terezasiciliani@outlook.com)

(81) 3453-7948

[mario.iputinga@hotmail.com](mailto:mario.iputinga@hotmail.com)

(81) 98820-5415 e (81) 99680-4255

### Minha Casa Pensionato Estudantil

Rua Jaguaribe, 48 - Torre, Recife - PE

Details:

Furnished, Unisex, includes breakfast and WiFi

Contact:

[raqueltabatchik@hotmail.com](mailto:raqueltabatchik@hotmail.com)

(81) 3227 3297



## STUDIO

### Up Residências Inteligentes

Rua Emiliano Braga, 133. Iputinga - Recife - PE

Details:

10 minutes by foot from UFPE. The rental includes wifi, water, electricity and cable bills (for most rooms)

Contact:

Facebook/Instagram: up - residências inteligentes

[more.upresidencias@gmail.com](mailto:more.upresidencias@gmail.com)

(81)99655 4083

## HOSTEL | ALBERGUE

### Zoya

Avenida Conselheiro Aguiar, 4405, Ap 105, Boa viagem - Recife- PE. CEP 51021-020

Details:

Unisex, furnished, includes breakfast

Contact:

[www.zoyabedandbreakfast.com](http://www.zoyabedandbreakfast.com)

[zoya@zoyabedandbreakfast.com](mailto:zoya@zoyabedandbreakfast.com)

(81) 3326 4297 / (81) 99228 5192

### Hostel Boa Viagem

Rua Aviador Severiano Lins, 455 - Boa Viagem - Recife - PE

Details:

Includes breakfast and Wifi

Contacts:

[www.hostelboaviagem.com.br](http://www.hostelboaviagem.com.br)

[hostel@hostelboaviagem.com.br](mailto:hostel@hostelboaviagem.com.br)

(81) 3326 9572 / (81) 3466 2486

### Hostel de Olinda

Rua do Sol, 233 - Carmo. Olinda - PE - CEP: 53120-010

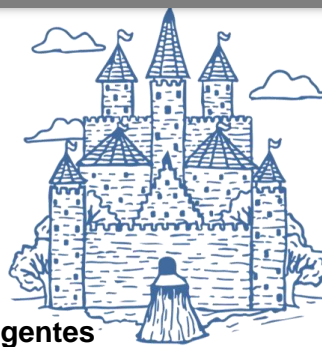
Details:

Includes breakfast and WiFi. Is connected to Hostelling International

Contacts:

[www.hosteldeolinda.com.br](http://www.hosteldeolinda.com.br)

(81) 3429 1592 / (81) 3439 1913



## Hostel Piratas da Praia

Avenida Conselheiro Aguiar, 2034, Ap 307, Boa viagem - Recife- PE. CEP 51111-010

Details:

Includes breakfast, wifi and locker with padlock

Contacts:

[www.piratasdapraia.com](http://www.piratasdapraia.com)

[capitaoganho@piratasdapraia.com](mailto:capitaoganho@piratasdapraia.com)

[reservas@piratasdapraia.com](mailto:reservas@piratasdapraia.com)

(81) 3326 1281 / (81) 99649 6887 / (81)

98786 6080

## ROOMS

Rua J.A. da Silveira, 124, Perto do Hospital D'Ávila, na Madalena - Recife - PE

Details:

3 bedrooms, furnished, Internet, TV and cleaner

Contact:

Carlos Santos

[lobielov@yahoo.com.br](mailto:lobielov@yahoo.com.br)

(11) 94034-4893

[leonardo.admcomex@hotmail.com](mailto:leonardo.admcomex@hotmail.com)

Rua Arquiteto Reinaldo, 193, Apt 405 - Pina - Recife - PE

Details:

Furnished, has Tv, Internet and washing machine - near RioMar Mall

Contact:

[felipe.bgp@gmail.com](mailto:felipe.bgp@gmail.com)

(81) 99893 7864

## APARTMENT / FLATS

Rua Padre Champagnat, 137, Cidade Universitária - Recife PE

Details:

Unisex

Contact:

Maria José Lira Llamoca Zarate

[mariallamoca@gmail.com](mailto:mariallamoca@gmail.com)

(81) 3453 9129







UNIVERSIDADE  
FEDERAL  
DE PERNAMBUCO

INTERNATIONAL AFFAIRS OFFICE  
UFPE - RECTORY BUILDING, 1ST FLOOR.  
AVENIDA PROFESSOR MORAES REGO, 1235  
CIDADE UNIVERSITÁRIA. RECIFE-PE - BRASIL  
CEP. 50.670-901  
PHONE: (81) 2126-7021 / 2126-8006